

SAMMAMISH RIDGE E S T A T E S

With Suver & Burnstead, the beauty is in the details...
the many, marvelous details.

Estate-worthy Living

Pass through an exclusive gated entry to this limited collection of privacy-graced, estate homesites - each further enhanced by private lakefront access with deeded dock and moorage. East Lake Sammamish Trail-linked recreation is within easy walking distance – and commutes to downtown Redmond, Microsoft and Highway 520 are close and quick.

Gourmet Kitchen

Host the grandest of entertainment with an array of Wolfe stainless steel appliances, including a 48-inch duel fuel commercial range, microwave, warming drawer, and ASKO dishwasher – plus a Subzero 42-inch built-in refrigerator and under-counter beverage center. Custom rift oak cabinets with dovetailed drawers and soft-close hinges accentuate the generous island with floating eating bar, quartz counter tops and full height tile backsplash. Two sets of french doors open onto an expansive covered patio, featuring a fireplace for outdoor entertainment.

Impeccable Interiors

From subtle to bold, dramatic 12' ceilings reign over the foyer, formal dining room and great room. Natural light floods the home interiors through clearstory windows. All four fireplaces boast custom face details, while a main level den provides a quiet retreat and private greenbelt deck. The lower level features a generous rec room with adjoining media room, wet bar, and dramatic wine cellar. A private stair leads to a well appointed upper level studio apartment with a kitchenette and separate bath.

Unparalleled Finishes

Brilliantly crafted millwork and detailing spans throughout the home. The great room see thru fireplace becomes the focus of the formal areas, while the custom steel railing and solid hardwood treads provide a graceful transition down to the lower level living spaces. Rift oak doors, custom cabinets and designer chosen finishes blend seamlessly and emphasize the commitment to quality.

Magnificent Master Suites

Enjoy the expansive windows in the main floor master suite. Revel in the warmth of the contemporary gas fireplace. Dramatic bath amenities include a walk-in shower/wet room featuring full-height glass panel walls, zero-entry floor, infinity drain, and custom freestanding tub, floating rift oak vanities with quartz slab counters and custom mirror surround. The generous master closet features built-in California closet systems.

Exquisite Exteriors, Energy Efficiency and More

Architectural elegance meets ultimate technology throughout. Exquisite clear cedar siding and soffits, tile roof, Pella clad wood windows, stone and stucco highlight the streetscape. A 3-car garage includes ample space to store your vehicles. High-efficiency gas furnaces and a main level air conditioner provide year round comfort. Extensive LED lighting throughout the interior and exterior fixtures deliver longer life and energy efficiency.

SAMMAMISH RIDGE E S T A T E S



The Coronado HOMESITE 8 | 1.1 ACRES

18858 NE 49th Place
Sammamish, WA 98074

\$3,198,000

Kathleen Pennington

(425) 890-2122

KATHLEENPENNINGTON@MSN.COM

www.burnstead.com

John L. Scott
REAL ESTATE

SUVER & BURNSTEAD
CUSTOM HOMES

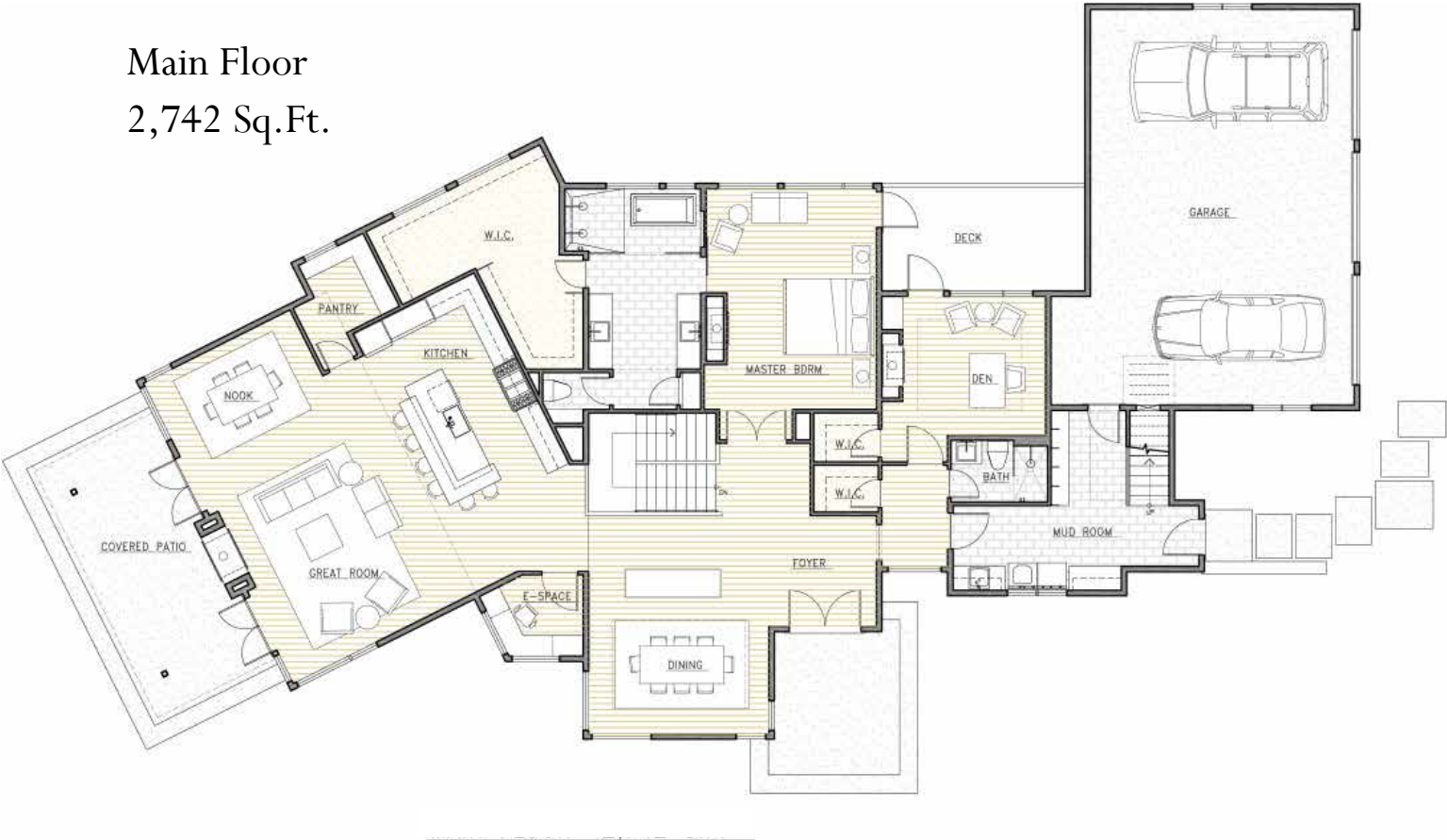
An Affiliate of Steve Burnstead Construction



SUVER & BURNSTEAD
CUSTOM HOMES

An Affiliate of Steve Burnstead Construction

Main Floor
2,742 Sq.Ft.



Lower Floor
1,388 Sq. Ft.



Loft Area
458 Sq. Ft.



The Coronado

- 4488 sq. ft. finished living space on a 1+acre cul-de-sac lot
- 4 bedrooms
- 5 baths
- 3-car garage
- Great room, formal dining room & den
- Main floor master suite
- Rec room, media room and wine room
- Large covered deck & covered lower patio
- Private 3rd story studio with bath, bedroom, living space & kitchenette

HIGHLIGHTS

Deeded lakefront community dock with private moorage slip for each homesite

Award-winning programs in Lake Washington School District's Blackwell Elementary, Ingelwood Middle and Eastlake High Schools

Close proximity to downtown Redmond, Highway 520 and Microsoft; walking distance to East Lake Sammamish Trail

Private gated community with estate homesites

www.burnstead.com

The Burnsteads, in an effort to continuously improve our homes, reserves the right to change or modify floor plans, elevations and specifications without notice or obligation. Dimensions and square footage are approximate. Decorative architectural features are optional and should be verified per plan. Plans and elevations are artist illustrations and may not be to scale or drawn with the same construction materials that this home will be built with. See our sales representative for more information.